

Tusk UTV Full View Glass Windshield Part# 2062240005

Congratulations on your purchase of the UTV Full View Glass Windshield for your Polaris. Please take note of the information and instructions below to get the most out of your Tusk Product.



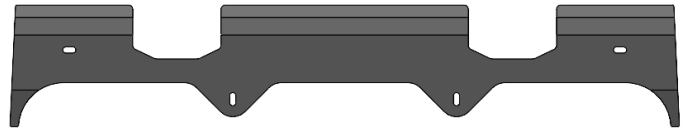
INSTALLATION INSTRUCTIONS AND INFORMATION

Fitment:

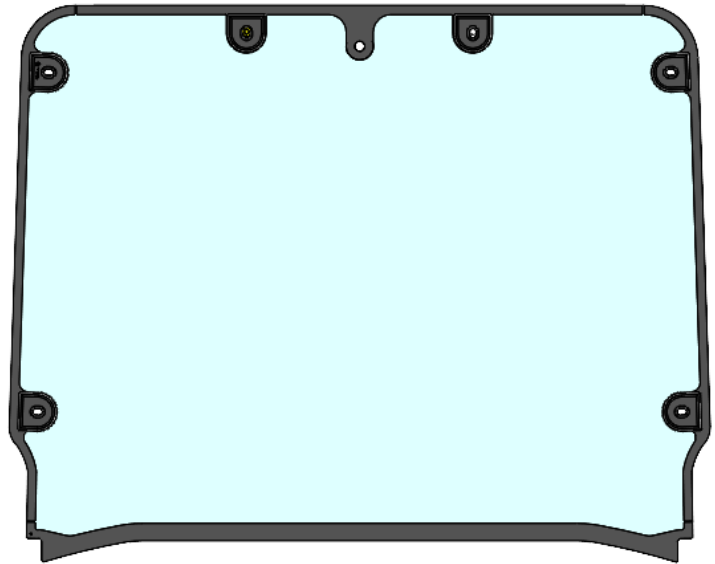
- 2020—2023 RZR Pro XP
- 2020—2023 RZR Pro XP 4
- 2022—2023 RZR Turbo R
- 2022—2023 RZR Turbo R 4

Contents:

- (1) Full View Glass Windshield
- (1) Upper Filler Panel
- (4) Tusk 2" Roll Cage Clamp
- (4) M8 x 35mm Button Head Bolts Black
- (2) M8 x 40mm Button Head Bolt Black
- (2) M8 x 20mm Button head Bolt Black
- (4) M8 Nyloc Nut Black
- (2) M8 Washer
- (2) Roof Filler Spacer
- (1) 16" Wiper Assembly
- (2) 38" Thin Foam Tape



Upper Filler Panel



Full View Glass Window



M8 Washer



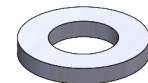
M8 Nyloc Nut



M8 x 40mm Button Head Bolt



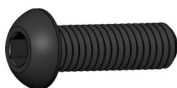
Tusk 2" Roll Cage Clamp



Roof Filler Spacer



M8 x 35mm Button Head Bolt



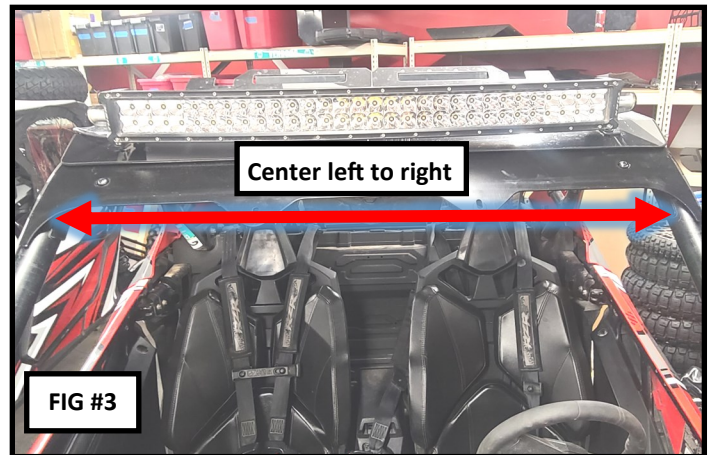
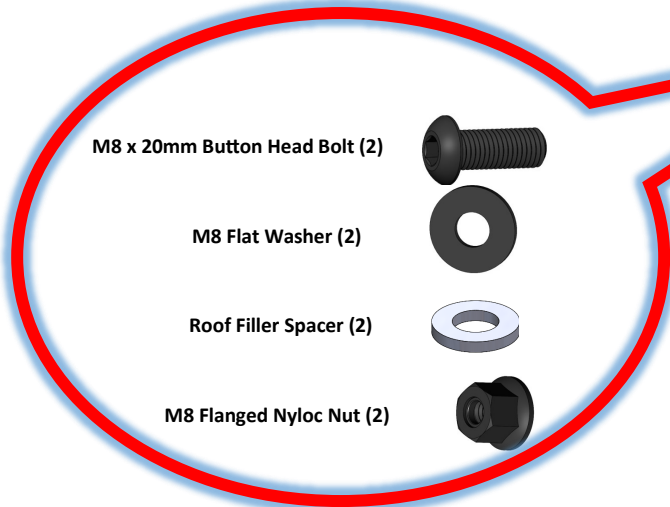
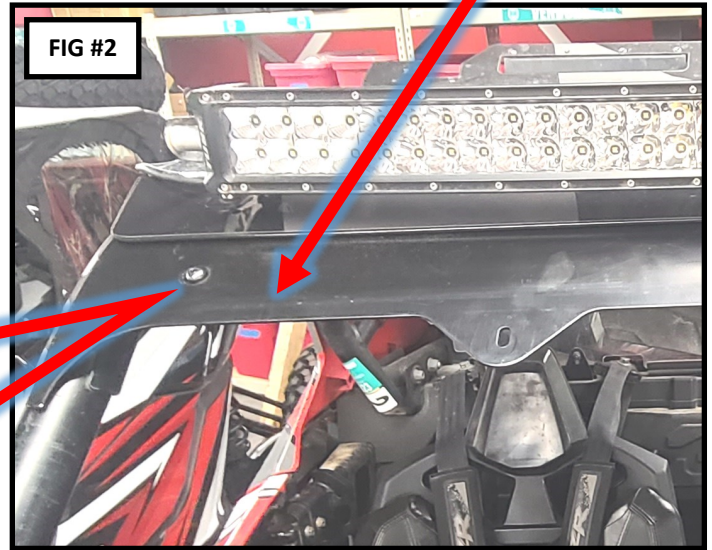
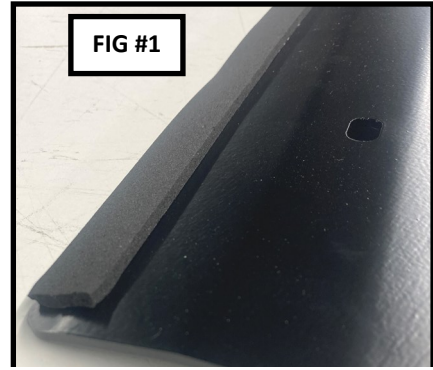
M8 x 20mm Button Head Bolt



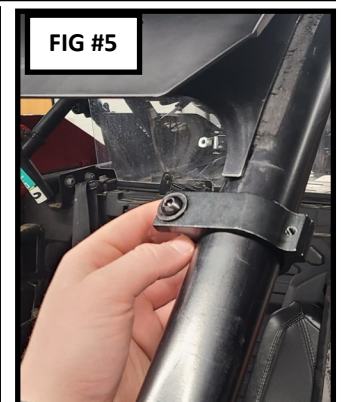
Foam Tape

Tusk UTV Full View Glass Windshield Part# 2062240005

1. Remove any accessories that may interfere with the installation of the Tusk Full View Glass Windshield. This windshield is intended to fit with the Polaris Plastic Roof. It may not work with other roofs or accessories.
2. Take the **Upper Filler Panel** and set it on a flat surface. Place the **(2) 38" Thin Foam Tape** along both sides of the top edge of the panel. This will contact the inside of the roof and roll cage when installed to prevent vibration noises. Trim as needed around the roof cutouts. **(FIG 1)**
3. Locate the supplied Upper Filler Panel and install it as shown using the supplied hardware. Install the bolt and washer on the outside and the nut on the back side. **(FIG 2)** The Upper Filler Panel will slide under the roof.



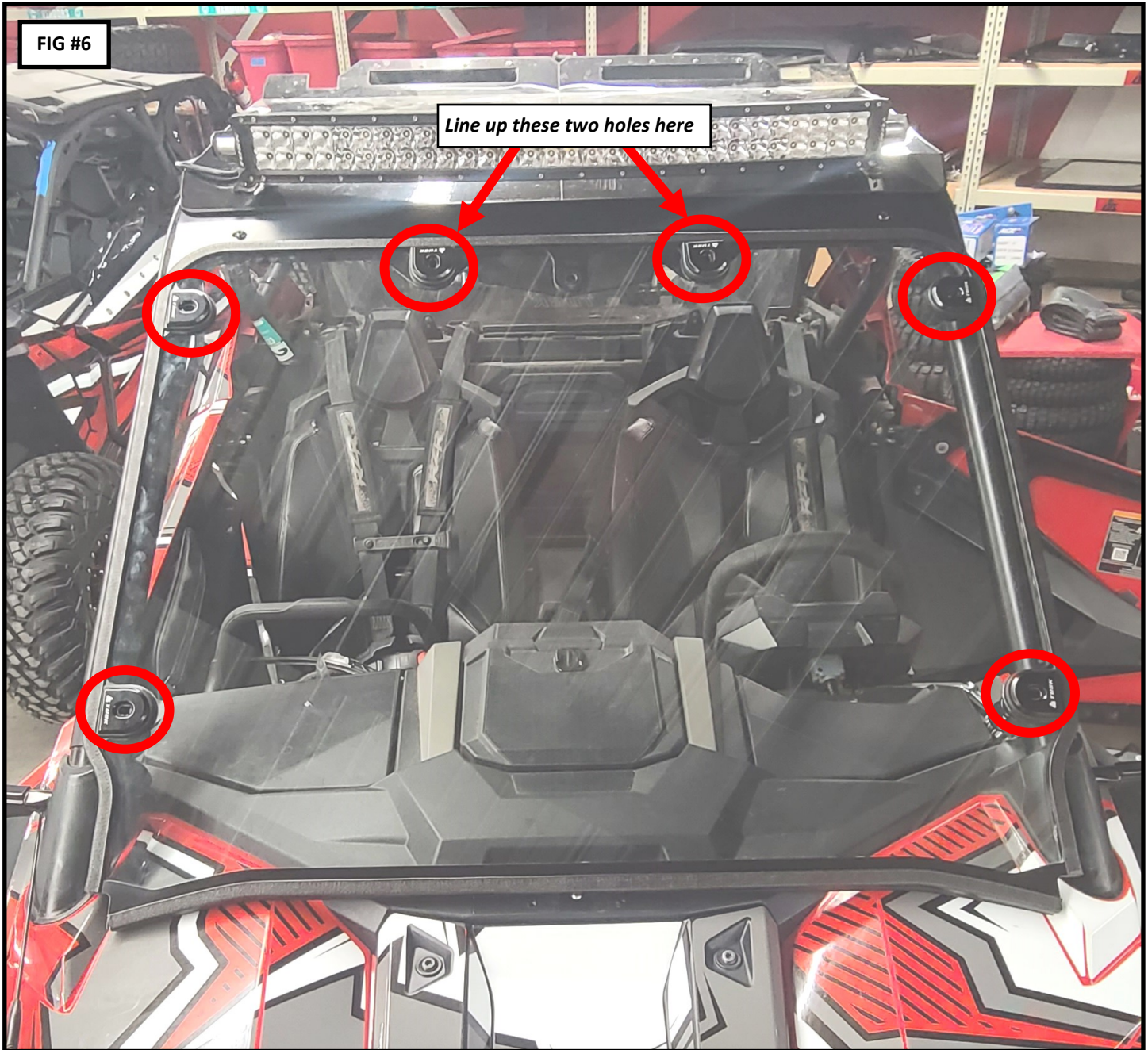
4. With the hardware still loose, center the Upper Filler Panel left to right and tighten the hardware. **(FIG 3)**
5. Locate the **(4) Roll Cage Clamps** and install two of them on each A-Pillar as shown in **(FIG 4 and 5)**. Set the clamp's rubber strip aside for now, this will be used later. Make sure the threaded arm of the clamp is towards where the windshield will be installed. Leave clamps loose and let the clamps slide down the A-Pillar for now.
6. Remove the button head bolt and washer that came installed in each of the clamps. This hardware will not be reused.



Tusk UTV Full View Glass Windshield Part# 2062240005

7. Locate your new Tusk Full View Window, make sure both sides of the metal grommets are in the rubber isolators. Be very cautious on these next steps not to break the glass window. It is smart to use a helper to complete this install.
8. Set the window in place with the bulb seal side facing the machine. **(FIG 6)**
9. Adjust the window to line up the grommets with the holes in the upper filler, they do not need to be perfect at this time. **(FIG 6)**

INSTALLATION INSTRUCTIONS AND INFORMATION



Tusk UTV Full View Glass Windshield Part# 2062240005

INSTALLATION INSTRUCTIONS AND INFORMATION

- 10. Install one of the supplied **M8 x 40mm Button Head Bolts** through the grommet into the upper filler, install the supplied **M8 Nyloc Nut** on the back side. Tighten only finger tight for now. **(FIG 7 and 8)**
- 11. Repeat this step for the opposite side.

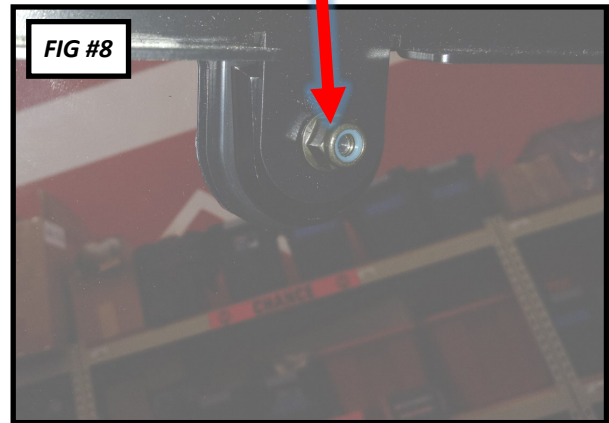


M8 x 40mm Button Head Bolt

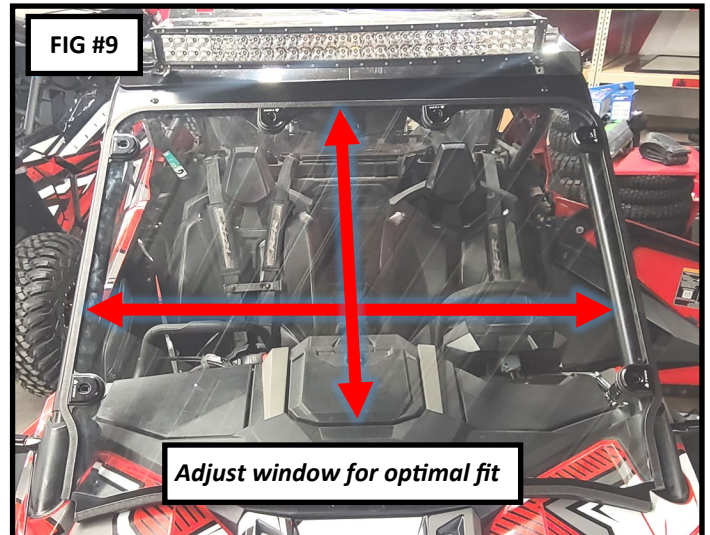


M8 Nyloc Nut

- 12. Locate the supplied **M8 x 35mm Button Head Bolts**, install the bolts through the remaining four grommets and thread them into the clamp. The clamps should still be loose. Leave finger tight.
- 13. Now that all mounting hardware is loosely installed center the windshield Left/Right, Up/Down. **(FIG 9)**



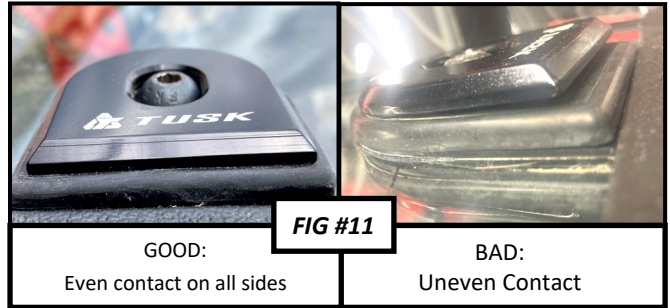
*****Do NOT put the weight of the windshield onto the hood. Having the bottom of the windshield resting on the hood while tightening the window to the roll cage may damage the window. The windshield is designed to float, resting the windshield on the hood defeats this purpose by adding additional stress to the glass. The bulb seal should only lightly touch the hood.*****



Adjust window for optimal fit

Tusk UTV Full View Glass Windshield Part# 2062240005

14. With the window adjusted, tighten **ONLY** the windshield bolts through the filler panel.
 15. Remove the back half of the roll cage clamps. Tighten the **M8x35mm Button Head Bolts**. Locate the rubber strip that was removed from the clamp. Trim the rubber strip in half. Reinstall the back half of the clamp with one half of the rubber strip in between the back half of the clamp and the roll cage **FIG 10**. The rubber strip is necessary to maintain proper clamping force around the roll cage.
- ***When installed correctly, the metal grommets will sit flush against its mating rubber isolator. FIG 11. If the metal grommet is not flush against the isolator when fully fastened, repeat step 15. Proper installation reduces stress on the isolators and allows the window to float as intended.*****
16. Periodically check all hardware for tightness.
 17. **Wiper Installation:** Install the wiper hardware through the glass with the supplied hardware (**FIG 12 and 13**)



Enjoy the use of your new Tusk Full View Glass Windshield!